

LEGEND:

- Advanced Warning Sign
- Barricade Flasher
- Closure Area
- Class One Barricade

VALLEY TRAFFIC SYSTEMS, INC.
 VALLEY TRAFFIC SYSTEMS, INC.
 TRAFFIC MANAGEMENT DIVISION
 8778 196A STREET
 LANGLEY BC V3M 2ZP
 PHONE: 604-513-3810
 FAX: 604-513-3811

REVISIONS:

DATE	DETAILS

- NOTES:**
1. Dates:
 2. Hours of Operation:
 3. Duration:
 4. Traffic Plan based on 40 km/h and 60 km/h speed zone
 5. Existing lane alignment to be reinstated at the end of each shift
 6. Traffic specifications based on the Traffic Management Manual for Work on Roadways (2020)

MUNICIPAL PROJECT NO.

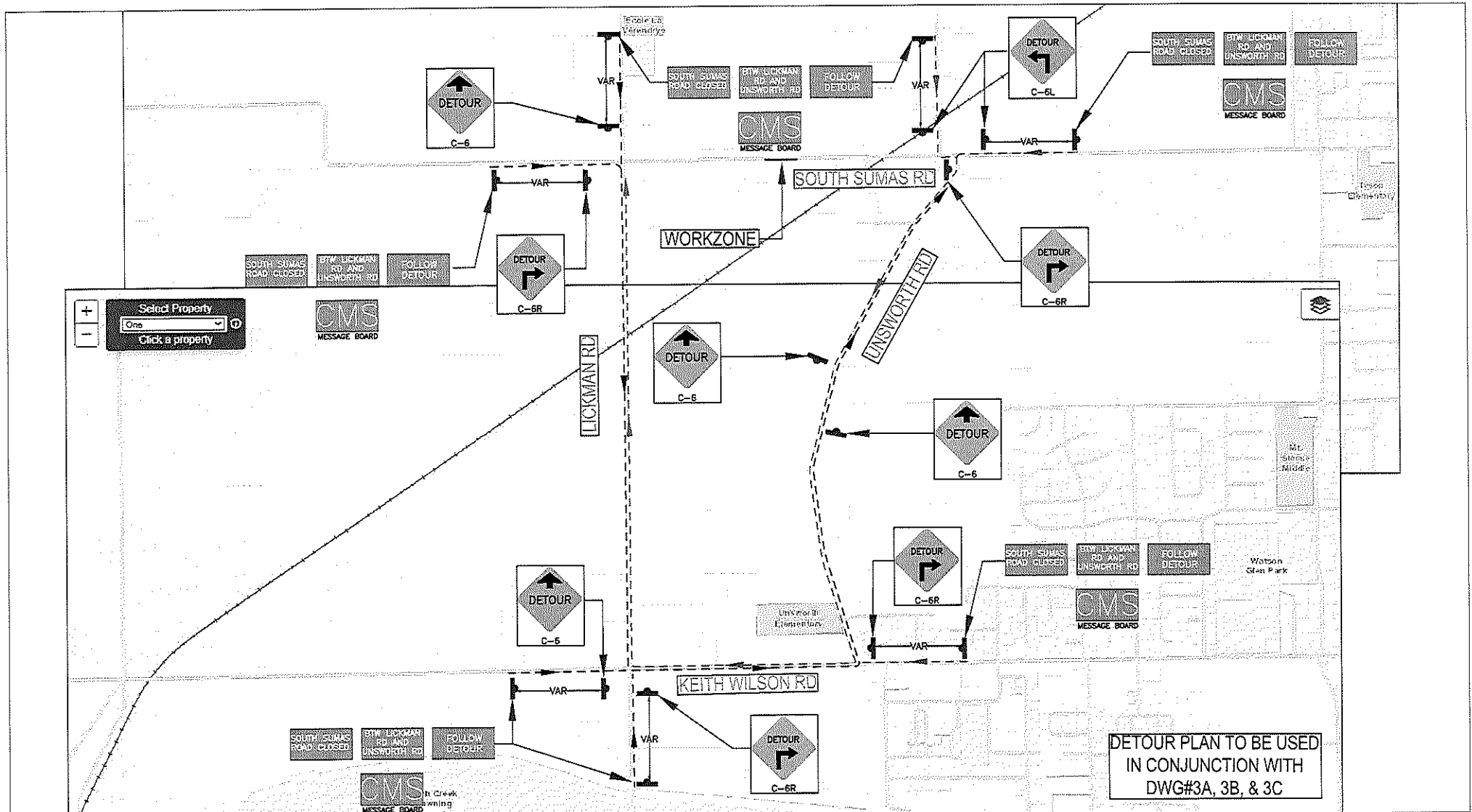
MUNICIPAL CONTRACT: T30

ON-SITE CONTACT:

ROAD STOP(S) TO BE REMOVED: N/A

PARKING METERS TO BE REMOVED: N/A

TRIPLE J					
CITY OF CHILLIWACK: 44290 SOUTH SUMAS ROAD					
Traffic Control Plan: Road Closure					
SCALE:	DATE:	VTS PROJ. NO.:	DWG. NO.:	REV. BY:	
	06.17.2020	18045	DWG#03C	00	OBI



DETOUR PLAN TO BE USED
IN CONJUNCTION WITH
DWG#3A, 3B, & 3C

LEGEND:

	Advanced Warning Sign
	Closure Area
	E/S Detour Route
	W/S Detour Route



REVISIONS:

DATE	DESCRIPTION

- NOTES:**
1. Dates:
 2. Hours of Operation:
 3. Duration:
 4. Traffic Plan based on 40 km/h and 60 km/h speed zone
 5. Existing lane alignment to be reinstated at the end of each shift
 6. Traffic specifications based on the Traffic Management Manual for Work on Roadways (2020)

MUNICIPAL PROJECT NO.

MUNICIPAL CONTACT:	180
ENGINE CONTACT:	
DATE STOPPED TO BE REMOVED:	N/A
PARKING STATUS TO BE REACHED:	N/A

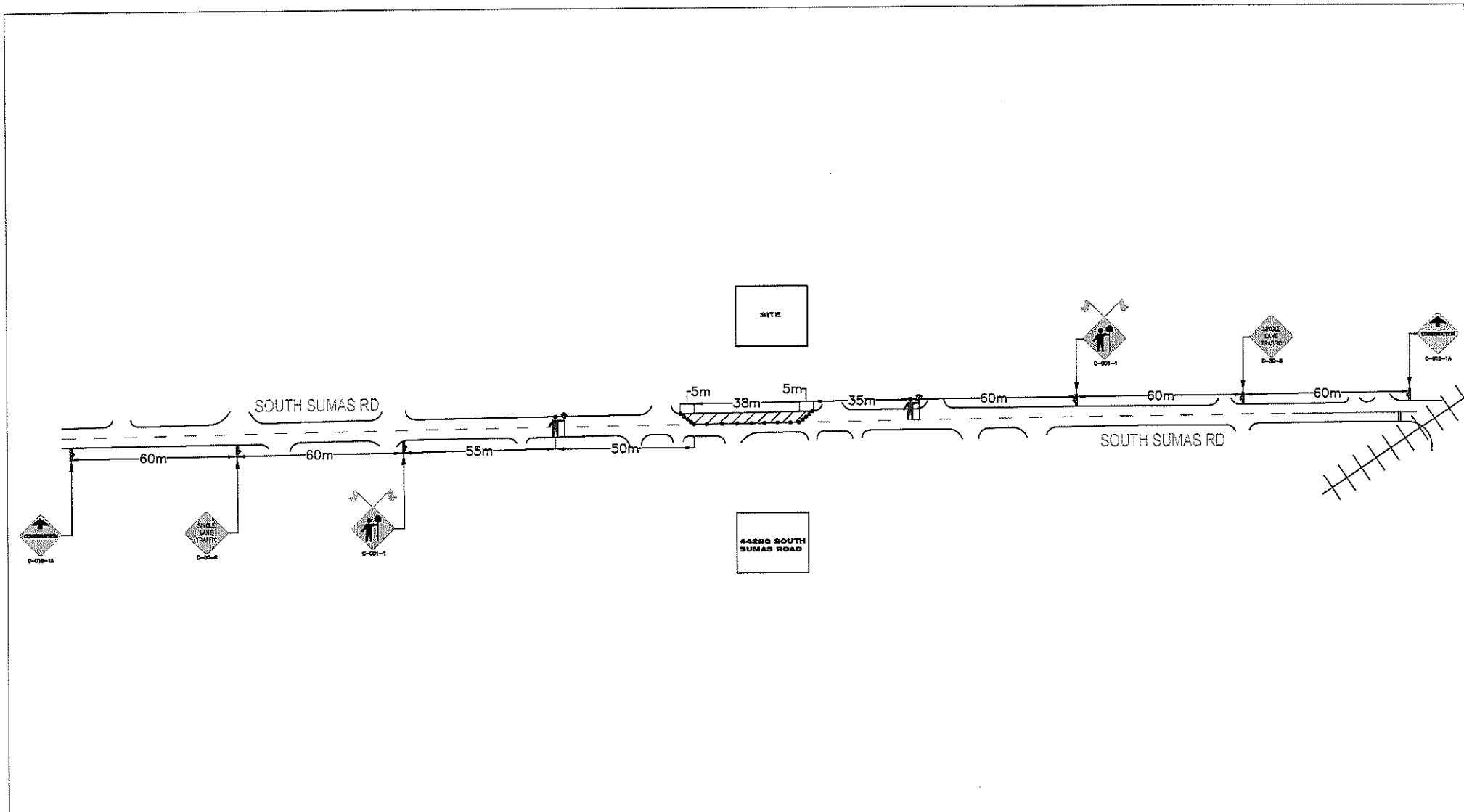
TRIPLE J

CITY OF CHILLIWACK: 44290 SOUTH SUMAS ROAD

Traffic Control Plan: Road Closure Detour Plan

SCALE:	DATE:	ISSUE NO.:	DWG. NO.:	DATE BY:	BY:
	06.17.2020	18045	DWG#03	00	OBI

Always Refer to the Original Specifications



LEGEND:

- Advanced Warning Sign
- Closure Area
- Delineator
- Traffic Control Person

VALLEY TRAFFIC SYSTEMS
 VALLEY TRAFFIC SYSTEMS, INC.
 TRAFFIC MANAGEMENT DIVISION
 8775 196 STREET
 LANGLEY, BC V3A 5C7
 PHONE: 604-413-2210
 FAX: 604-413-3981

REVISIONS:

DATE	DETAILS

- NOTES:**
1. Dates:
 2. Hours of Operation:
 3. Duration:
 4. Traffic Plan based on 60 km/h speed zone
 5. TCPs to assist pedestrian and cyclists as required
 6. TCPs to accommodate local traffic as required in and out of residences
 7. TCPs to accommodate emergency vehicles as required
 8. Existing lane alignment to be reinstated at the end of each shift
 9. Traffic specifications based on the Traffic Management Manual for Work on Roadways (2020)

MUNICIPAL PROJECT NO.

MUNICIPAL CORP/AGENCY

CHARGE CONTACT:

DATE STOP(S) TO BE REMOVED:

PARKING NOTICES TO BE REMOVED:

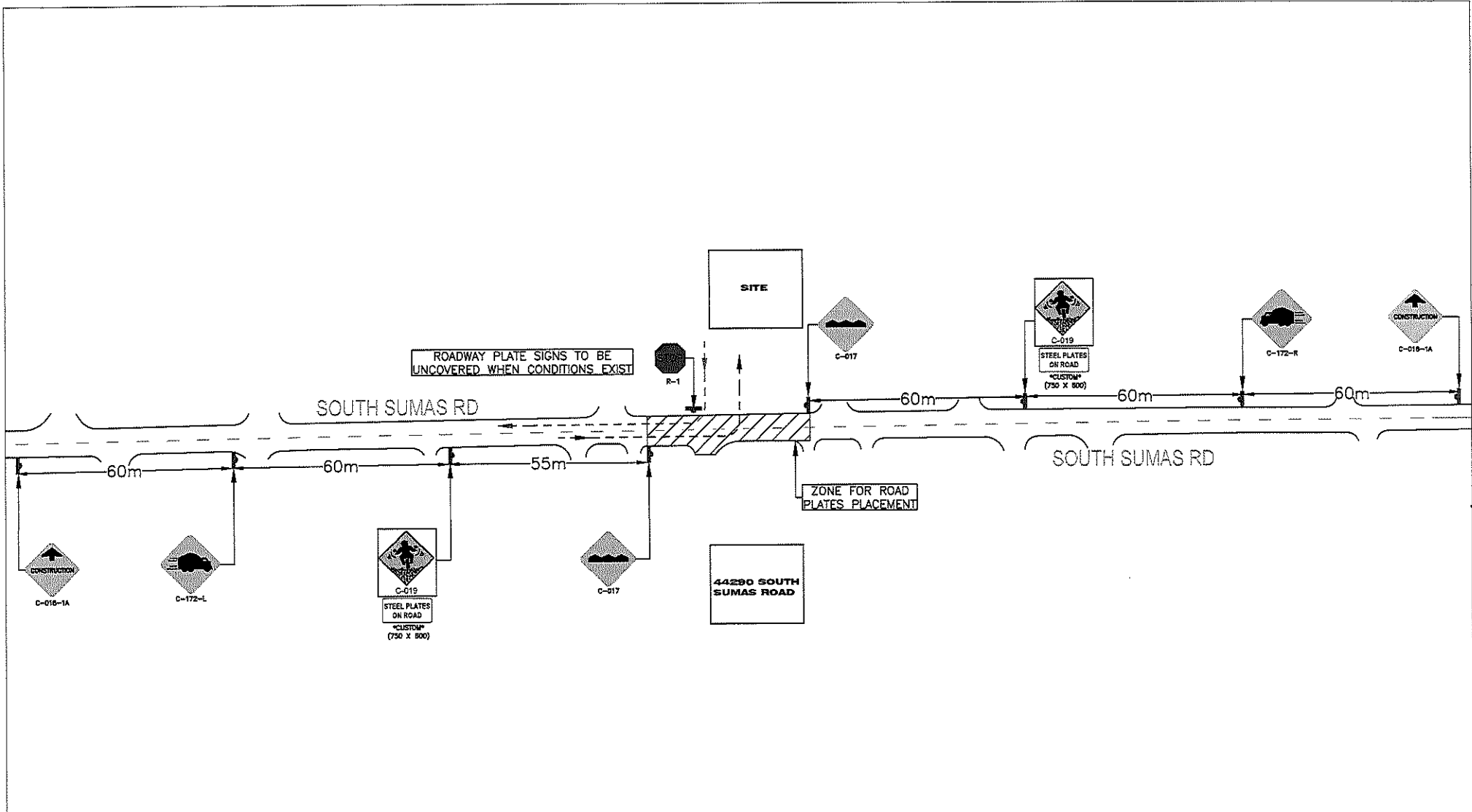
TRIPLE J

CITY OF CHILLIWACK: 44290 SOUTH SUMAS ROAD

Traffic Control Plan: SLAT/ WB Closure

ENGINEER SEAL

SCALE:	DATE:	PROJ. NO.:	DWG. NO.:	REV. BY:
	06.17.2020	18045	DWG#01	00 OBI



LEGEND:

- Advanced Warning Sign
- Truck Entry Route
- Truck Exit Route
- Road Plate(s) Zone

VALLEY TRAFFIC SYSTEMS
 VALLEY TRAFFIC SYSTEMS, INC.
 TRAFFIC MANAGEMENT DIVISION
 9750 196th STREET
 LANGLEY BC V1M 2J7
 PHONE: 604-813-2510
 FAX: 604-813-2861

REVISIONS:

DATE	DETAILS

- NOTES:**
1. Dates:
 2. Hours of Operation:
 3. Duration:
 4. Traffic Plan based on 60 km/h speed zone
 5. Existing lane alignment to be reinstated at the end of each shift
 6. Traffic specifications based on the Traffic Management Manual for Work on Roadways (2020)

MUNICIPAL PROJECT NO.

MUNICIPAL CONTACT:
TBD

ON-SITE CONTACT:

BLDG STOP(S) TO BE REMOVED:
N/A

PARKING SPACES TO BE REMOVED:
N/A

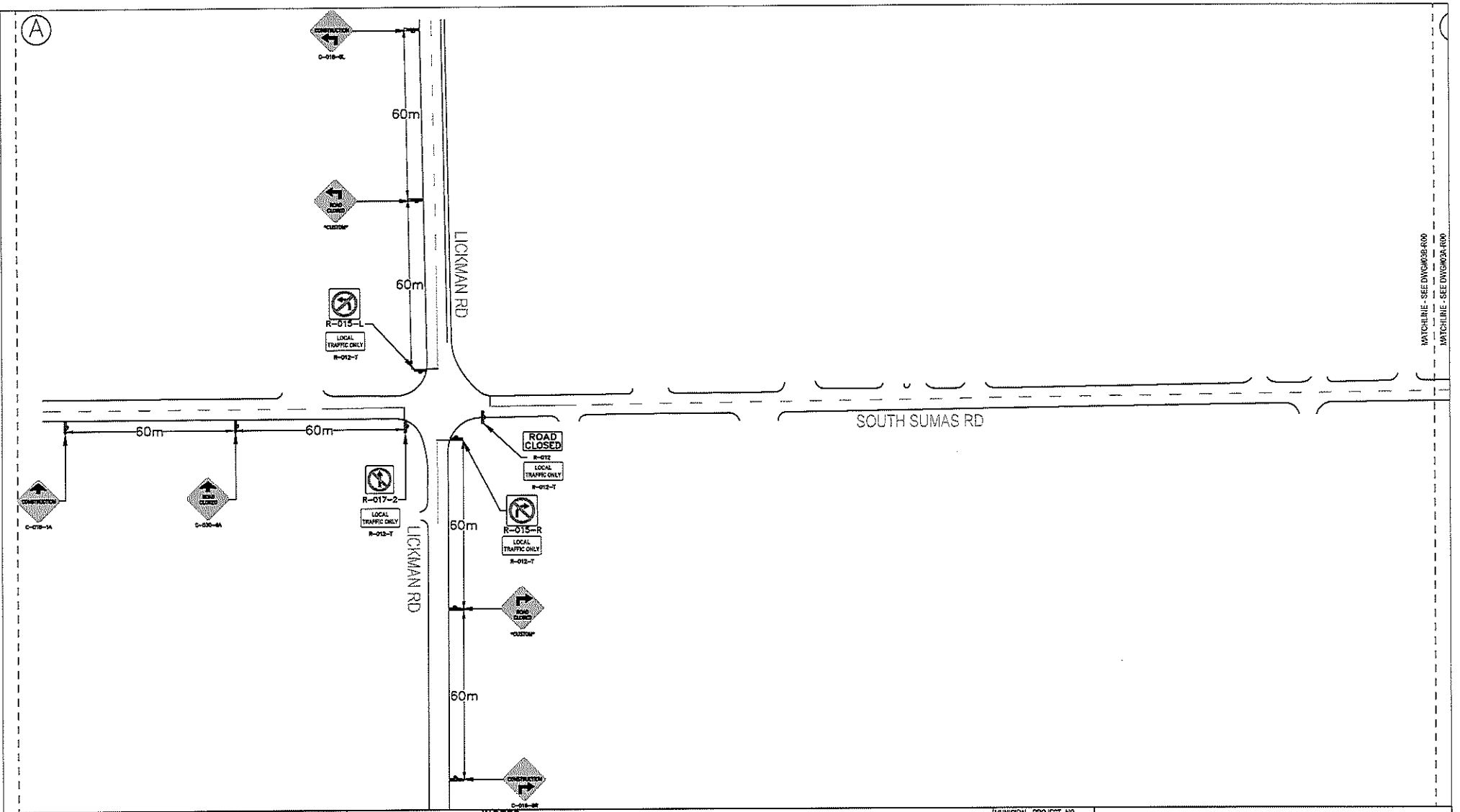
TRIPLE J

CITY OF CHILLIWACK: 44290 SOUTH SUMAS ROAD

ENGINEER SEAL

Traffic Control Plan: Truck Access/ Egress (with installed Road Plates)

SCALE:	DATE:	REV. PROJ. NO.:	DWG. NO.:	ISSUE BY:	DATE:
	06.17.2020	18045	DWG#02	00	OBI



MATCHLINE - SEE DWG#03B-100
 MATCHLINE - SEE DWG#03A-100

LEGEND:

- Advanced Warning Sign
- Berkeley Flasher
- Closure Area
- Close One Berkeley

VALLEY TRAFFIC SYSTEMS, INC.
 TRAFFIC MANAGEMENT DIVISION
 8710 198A STREET
 LANGLEY BC V1B 2P7
 PHONE: 604-513-8200
 FAX: 604-513-3861

REVISIONS:

DATE	DETAILS

- NOTES:**
1. Dates:
 2. Hours of Operation:
 3. Duration:
 4. Traffic Plan based on 40 km/h and 60 km/h speed zone
 5. Existing lane alignment to be reinstated at the end of each shift
 6. Traffic specifications based on the Traffic Management Manual for Work on Roadways (2020)

MUNICIPAL PROJECT NO. _____

MUNICIPAL CONTACT: TPO _____

DESIGN CONTACT: _____

DATE STOPPED TO BE REMOVED: N/A

PARKING SPACES TO BE REMOVED: N/A

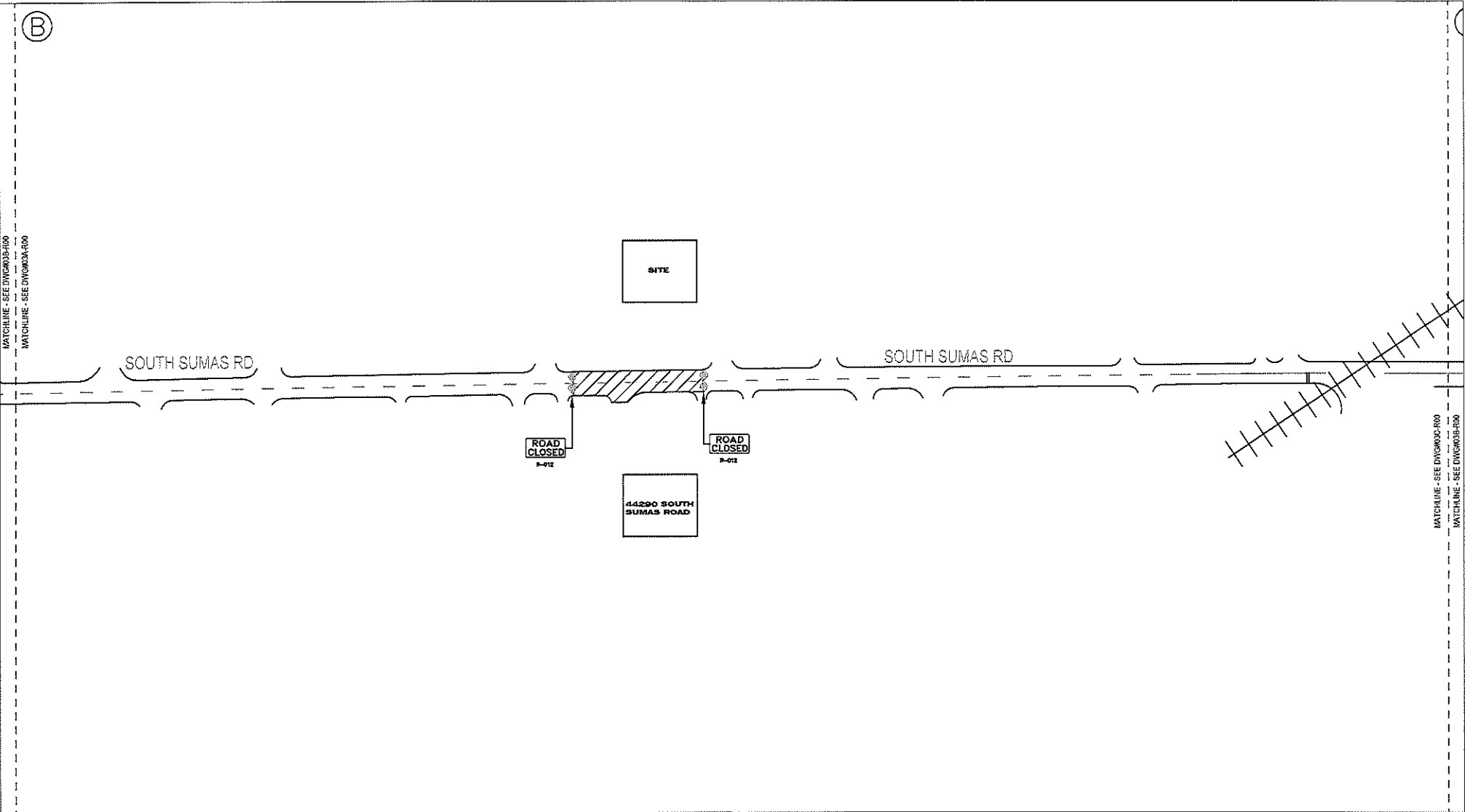
TRIPLE J

CITY OF CHILLIWACK: 44290 SOUTH SUMAS ROAD

Traffic Control Plan: Road Closure

ENGINEER SEAL

SCALE:	DATE:	VIS. PROJ. NO.:	DWG. NO.:	REV. BY:
	05.17.2020	18045	DWG#03A	00 OBI



LEGEND:

	Advanced Warning Sign
	Barricade Flasher
	Closure Area
	Cham Owe Barricade

VALLEY TRAFFIC SYSTEMS, INC.
 TRAFFIC MANAGEMENT DIVISION
 8725 196A STREET
 LANGLEY BC V3V 2P7
 PHONE: 604-533-2522
 FAX: 604-513-3881

REVISIONS:

DATE	DETAILS

- NOTES:**
1. Dates:
 2. Hours of Operation:
 3. Duration:
 4. Traffic Plan based on 40 km/h and 60 km/h speed zone
 5. Existing lane alignment to be reinstated at the end of each shift
 6. Traffic specifications based on the Traffic Management Manual for Work on Roadways (2020)

MUNICIPAL PROJECT NO.	
MUNICIPAL COUNCIL:	TBD
ONSITE CONTACT:	
WALK STOPPED TO BE REMOVED:	N/A
PARKING METERS TO BE REMOVED:	N/A

TRIPLE J			
CITY OF CHILLIWACK: 44290 SOUTH SUMAS ROAD			
Traffic Control Plan: Road Closure			
SCALE:	DATE: 06.17.2020	YES PROJ. NO.: 18045	DWG. NO.: DWG#03B 00 OBI

Valley Traffic Systems Inc. (Langley) Project: 18045